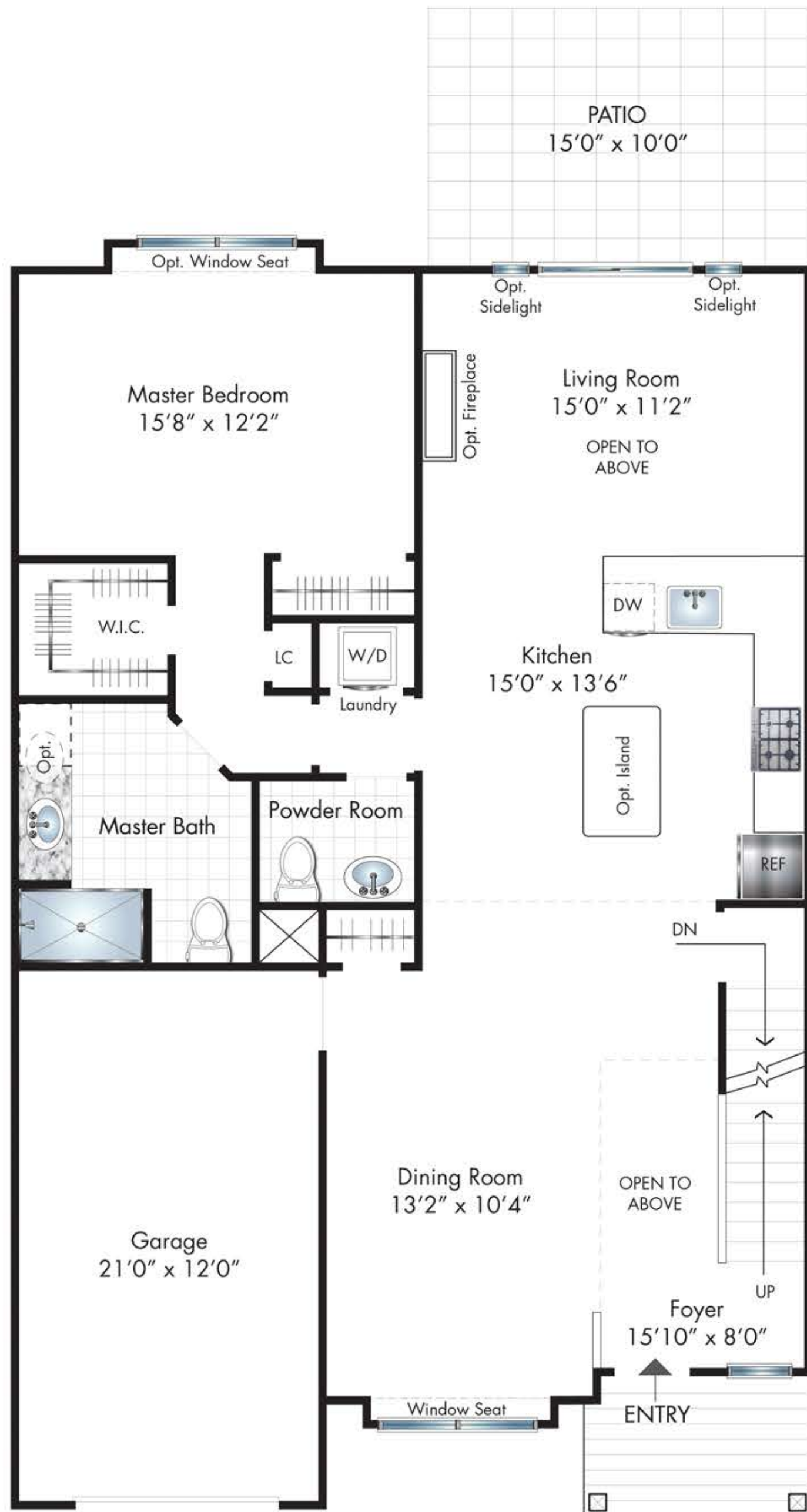


The Barolo TOWNHOME

2 Bedrooms • 2.5 Baths • Loft • Patio • Basement • Garage

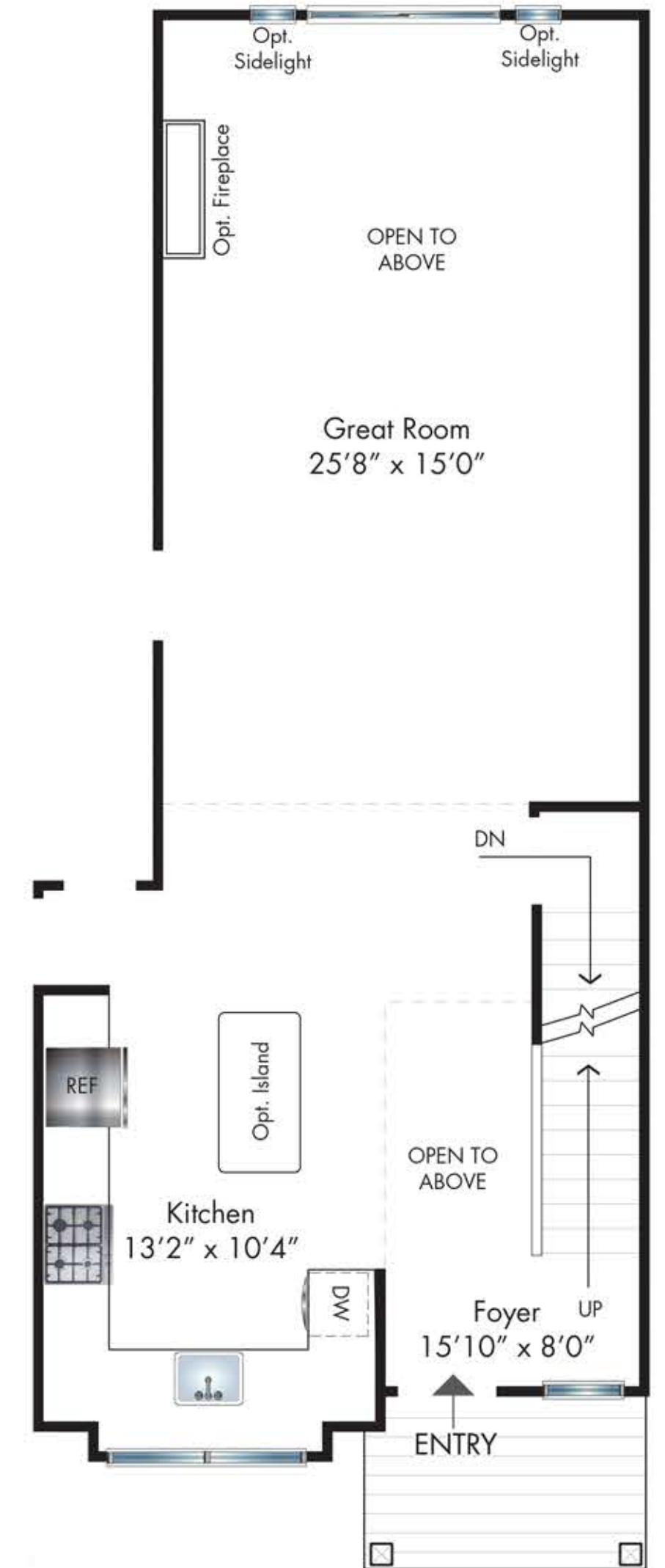
Living Area 1,997 Sq.Ft. • Basement 1,070 Sq.Ft. • Garage 206 Sq.Ft.



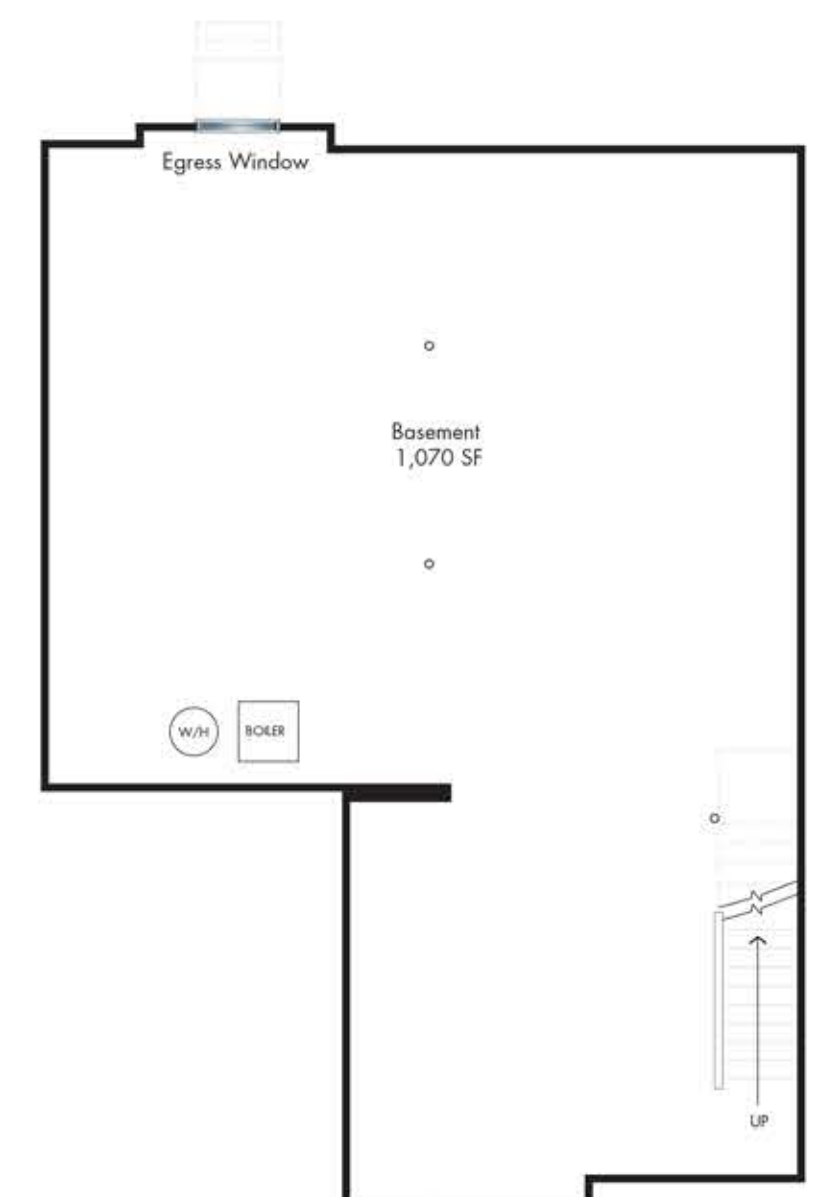
FIRST FLOOR



SECOND FLOOR



OPTIONAL KITCHEN LAYOUT



BASEMENT

